



CERTIFIED WEIGHT REPORT

Part Number: **71592** (产品编号: 71592) Solvent: Acetone Lot#: 81025  
 Lot Number: **093024** (产品批号: 021523)  
 Description: **Chlorophyll A/B Extract [1.00 : 1.76] in oil**

Expiration Date: **093027** (保质期: 2027-09-30)  
 Recommended Storage: **Refrigerate (4 °C)** (推荐保存条件: 4 避光)  
 Nominal Concentration ( $\mu\text{g/mL}$ ): **1000**  
 NIST Test ID#: **6UTB** 5E-05 Balance Uncertainty

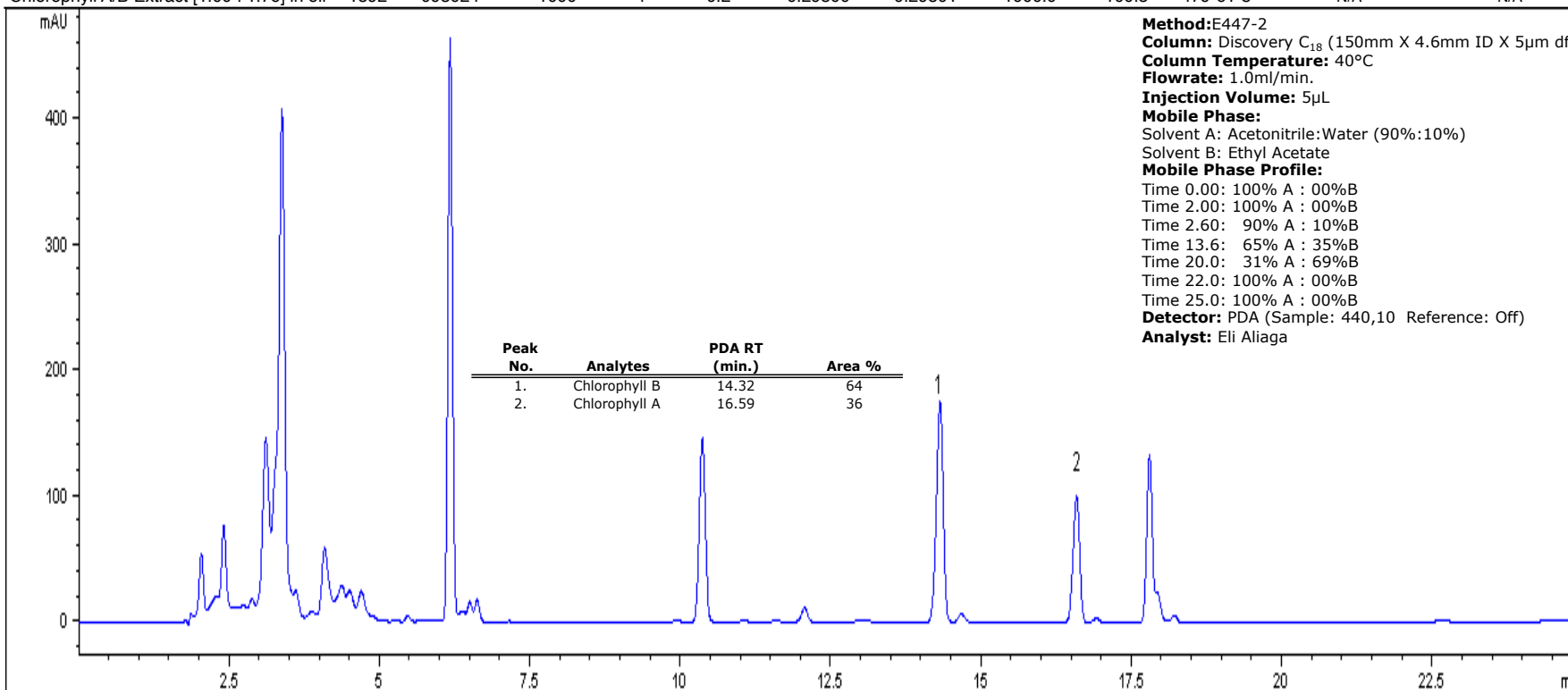
Weight(s) shown below were combined and diluted to (mL): **11.8** 0.057 Flask Uncertainty

*Eli Aliaga* 093024  
 Formulated By: **Eli Aliaga** DATE  
*Pedro L. Rentas* 093024  
 Reviewed By: **Pedro L. Rentas** DATE

Expanded SDS Information (Solvent Safety Info. On Attached pg.)

| Compound | RM# | Lot Number | Nominal Conc ( $\mu\text{g/mL}$ ) | Purity (%) | Uncertainty Purity (%) | Target Weight(g) | Actual Weight(g) | Actual Conc ( $\mu\text{g/mL}$ ) | Uncertainty (+/-) $\mu\text{g/mL}$ | CAS# | OSHA PEL (TWA) | LD50 |
|----------|-----|------------|-----------------------------------|------------|------------------------|------------------|------------------|----------------------------------|------------------------------------|------|----------------|------|
|----------|-----|------------|-----------------------------------|------------|------------------------|------------------|------------------|----------------------------------|------------------------------------|------|----------------|------|

1. Chlorophyll A/B Extract [1.00 : 1.76] in oil 1592 093024 1000 4 0.2 0.29500 0.29501 1000.0 100.5 479-61-8 N/A N/A  
 (实际浓度)(扩展不确定度)



Method: E447-2  
 Column: Discovery C<sub>18</sub> (150mm X 4.6mm ID X 5 $\mu\text{m}$  df)  
 Column Temperature: 40°C  
 Flowrate: 1.0ml/min.  
 Injection Volume: 5 $\mu\text{L}$   
 Mobile Phase:  
 Solvent A: Acetonitrile:Water (90%:10%)  
 Solvent B: Ethyl Acetate  
 Mobile Phase Profile:  
 Time 0.00: 100% A : 00%B  
 Time 2.00: 100% A : 00%B  
 Time 2.60: 90% A : 10%B  
 Time 13.6: 65% A : 35%B  
 Time 20.0: 31% A : 69%B  
 Time 22.0: 100% A : 00%B  
 Time 25.0: 100% A : 00%B  
 Detector: PDA (Sample: 440,10 Reference: Off)  
 Analyst: Eli Aliaga

- The certified value is the concentration calculated from gravimetric and volumetric measurements unless otherwise stated.
- Standards are prepared gravimetrically using balances that are calibrated with weights traceable to NIST (see above).
- Standards are certified (+/-) 0.5% of the stated value, unless otherwise stated.
- All Standards, after opening ampule, should be stored with caps tight and under appropriate laboratory conditions.
- Uncertainty Reference: Taylor, B.N. and Kuyat, C.E., "Guidelines for Evaluating and Expressing the Uncertainty of NIST Measurement Result," NIST Technical Note 1297, U.S. Government Printing Office, Washington, DC, (1994).